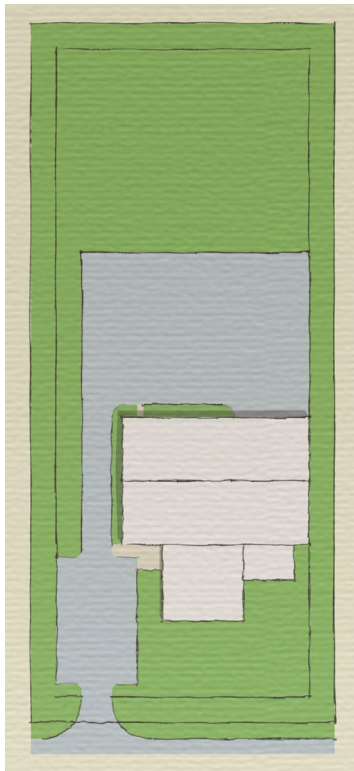


2104 GENERAL BUSINESS (GB) DISTRICT

2104.A PURPOSE

The General Business District includes lands in proximity to the village centers and along the main travel corridors. These areas include a mix of commercial and industrial uses, interspersed with residential lots and undeveloped land. It is the intent of this district to: (1) Provide suitable locations for a diversity of businesses; and (2) Maintain and enhance the character of these areas so that they will be an attractive location for businesses to locate and expand.

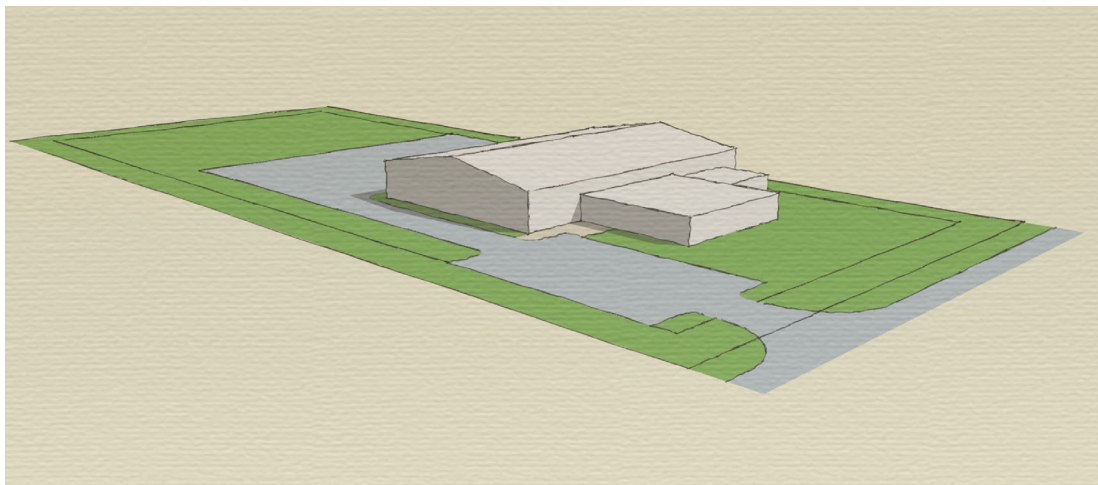
2104.B DIMENSIONAL STANDARDS



LOTS		
(1)	Minimum lot size	3 acres
(2)	Minimum lot frontage	240 feet
(3)	Maximum lot coverage	40 percent

SETBACKS		
(4)	Minimum front setback	20 feet
(5)	Maximum front setback	n/a
(6)	Minimum side and rear setbacks	20 feet
(7)	Minimum stream or shoreline setbacks	50 feet

STRUCTURES		
(8)	Maximum principal building footprint	n/a
(9)	Minimum principal building height	n/a
(10)	Maximum structure height	36 feet



2104.C

PERMITTED USES**Residential and Lodging Uses**

- (1) Single-family dwelling
- (2) Two-family dwelling
- (3) Multi-family dwelling ^{SP}
- (4) Rooming & boarding house ^{SP}
- (5) Accessory dwelling
- (6) Home occupation
- (7) Home business ^{SP}
- (8) Family childcare home
- (9) Bed and breakfast
- (10) Short-term rental
- (11) Group home
- (12) Care home ^{SP}
- (13) Lodging facility ^{SP}
- (14) Campground or resort ^{SP}

Commercial Uses

- (15) Retail sales ^{1 SP}
- (16) Repair service ^{1 SP}
- (17) Lawn, garden and farm supply sales ^{SP}
- (18) Lumberyard and building supply sales ^{SP}
- (19) Rental and leasing ^{1 SP}
- (20) Office, professional, business or financial service ^{1 SP}

Commercial Uses

- (21) Personal service ^{1 SP}
- (22) Restaurant, sit-down ^{SP}
- (23) Catering or commercial kitchen ^{SP}

Industrial Uses

- (24) Light industry ^{2 SP}
- (25) Food or beverage manufacturing ^{2 SP}
- (26) Wood products manufacturing ^{2 SP}
- (27) Stone products manufacturing ^{2 SP}
- (28) Metal fabrication shop ^{SP}
- (29) Wholesale trade ^{SP}
- (30) Storage and distribution services ^{SP}
- (31) Media recording or broadcasting studio ^{SP}
- (32) Communications antenna ^{SP}
- (33) Contractor's yard or unenclosed storage ^{SP}

Art and Entertainment Uses

- (34) Theater ^{SP}
- (35) Artist gallery or studio ^{SP}
- (36) Museum or library ^{SP}
- (37) Indoor recreation ^{1 SP}
- (38) Public outdoor recreation, park or nature preserve ^{SP}

Civic and Community Uses

- (39) Government facility ^{SP}
- (40) Specialty school ^{1 SP}
- (41) Clinic or outpatient care service ^{SP}
- (42) Child day care ^{SP}
- (43) Religious institution ^{SP}
- (44) Funeral service ^{SP}
- (45) Cemetery ^{SP}
- (46) Social club ^{SP}

Natural Resource Based Uses

- (47) Farming or forestry
- (48) Firewood processing ^{SP}
- (49) On-farm business ^{SP}
- (50) Agricultural enterprise ^{SP}

Notes

¹ Limited to a maximum of 3,000 square feet

² Limited to a maximum of 6,000 square feet

^{SP} Site plan review required

2104.D

CONDITIONAL USES**Commercial Uses**

- (1) Retail sales ^{1 SP}
- (2) Sales lot ^{SP}
- (3) Repair service ^{1 SP}
- (4) Fueling station or carwash ^{SP}
- (5) Rental and leasing ^{1 SP}
- (6) Office, professional, business or financial service ^{1 SP}
- (7) Personal service ^{1 SP}
- (8) Veterinary, pet or animal service ^{SP}
- (9) Restaurant, take-out ^{SP}
- (10) Event facility ^{SP}

Industrial Uses

- (11) Light industry ^{2 SP}
- (12) Food or beverage manufacturing ^{2 SP}
- (13) Wood products manufacturing ^{2 SP}
- (14) Stone products manufacturing ^{2 SP}
- (15) Tank farm or fuel storage ^{SP}
- (16) Transportation services ^{SP}
- (17) Communications tower ^{SP}
- (18) Waste services ^{SP}

Art and Entertainment Uses

- (19) Indoor recreation ^{1 SP}
- (20) Commercial outdoor recreation ^{SP}
- (21) Golf course or country club ^{SP}
- (22) Equestrian facility ^{SP}

Civic and Community Uses

- (23) Educational institution ^{SP}
- (24) Specialty school ^{1 SP}

Natural Resource Based Uses

- (25) Extraction and quarrying

Notes

¹ More than 3,000 square feet

² Limited to a maximum of 6,000 square feet

^{SP} Site plan review required